



Skate Dallas Operations & Safety Plan

Contents

Overall Event.....	2
Schedule.....	2
Building Access and Layout.....	2
Athletes.....	3
Chaperones / Spectators.....	4
Coaches.....	5
Officials.....	6
Awards.....	6
Practice Ice Flow.....	7
Disinfecting Process.....	7
COVID Considerations.....	7

LOC Chair: Rose Varner
Chief Referee: Nancy Iida

Overall Event

- Masks must always be worn except for Skaters that are on the ice.
- Temperature will be checked & screening will be administered upon entry.
- Chaperones and spectators will be admitted for the athlete's actual competition time only.
- Young children attending the event as spectators must remain with a Chaperone, at all times.
- Skate Orders and Results will only be posted [online](#), QR code for which will be located on the back of credentials.
- Awards will be given to 1st – 6th Place and presented in the awards area once results have been posted.
- Locker Rooms will NOT be available.
- Come dressed and ready to skate.
- Young Athletes or Athletes requiring special assistance, will be allowed one Chaperone to accompany them into warm-up area to assist with putting on skates on. The Chaperone is not permitted to stay and watch from the warm-up area, they must exit and observe from the designated seating area in the stands only.
- Young Athletes or Athletes requiring special assistance, will be allowed one Chaperone to accompany them into the Warmup Zone at event time to help get skates on. Then the Chaperone must immediately exit the area and move to the designated arena seating. Chaperones must be over the age of 18 and an immediate family member as defined in U.S. Figure Skating's SafeSport Handbook.

Schedule

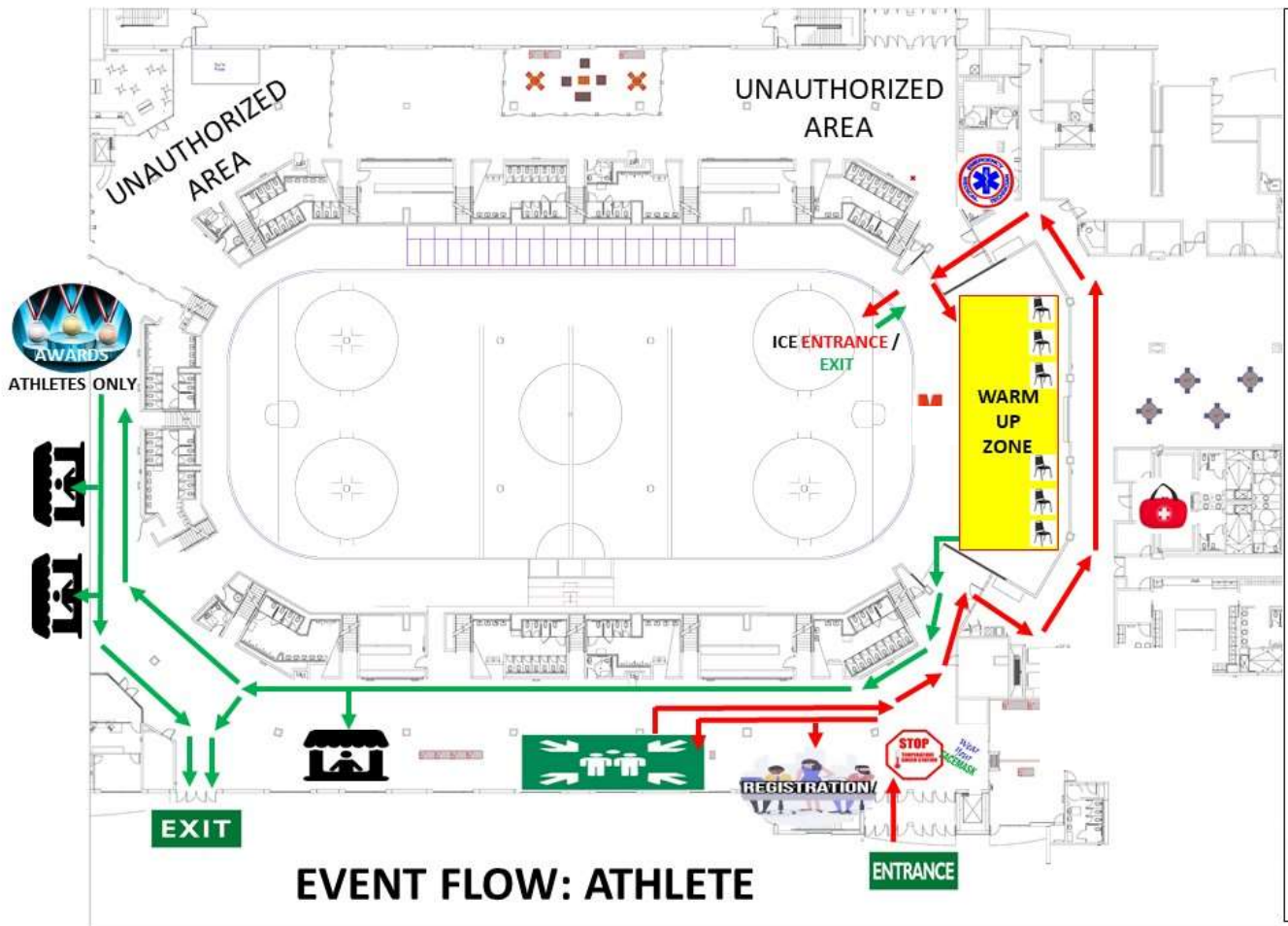
A Detailed Schedule for the competition is available in EMS and online at [here](#) <https://ijs.usfigureskating.org/leaderboard/results/2021/29935/index.asp> or using the QR Code displayed around the arena and on the back of credentials. Athletes have designated times for arrival for both competition and practice ice. No individual will have access to the building without appropriate supervision. Ushers will lead athletes to the appropriate locations for off-ice warm up and access to the ice.

Building Access and Layout

Pathways have been established within the building to minimize footprint and socialization between groups. You will not be permitted access to the building until your designated time per the detailed schedule. Athletes who miss their arrival time will be escorted to the appropriate area in accordance with their schedule – they cannot 'redo' a missed warm up. Detailed layouts and pathways are shown for Athletes, Chaperones/Spectators, Coaches and Officials under the respective sub-headings on pages 3-7.

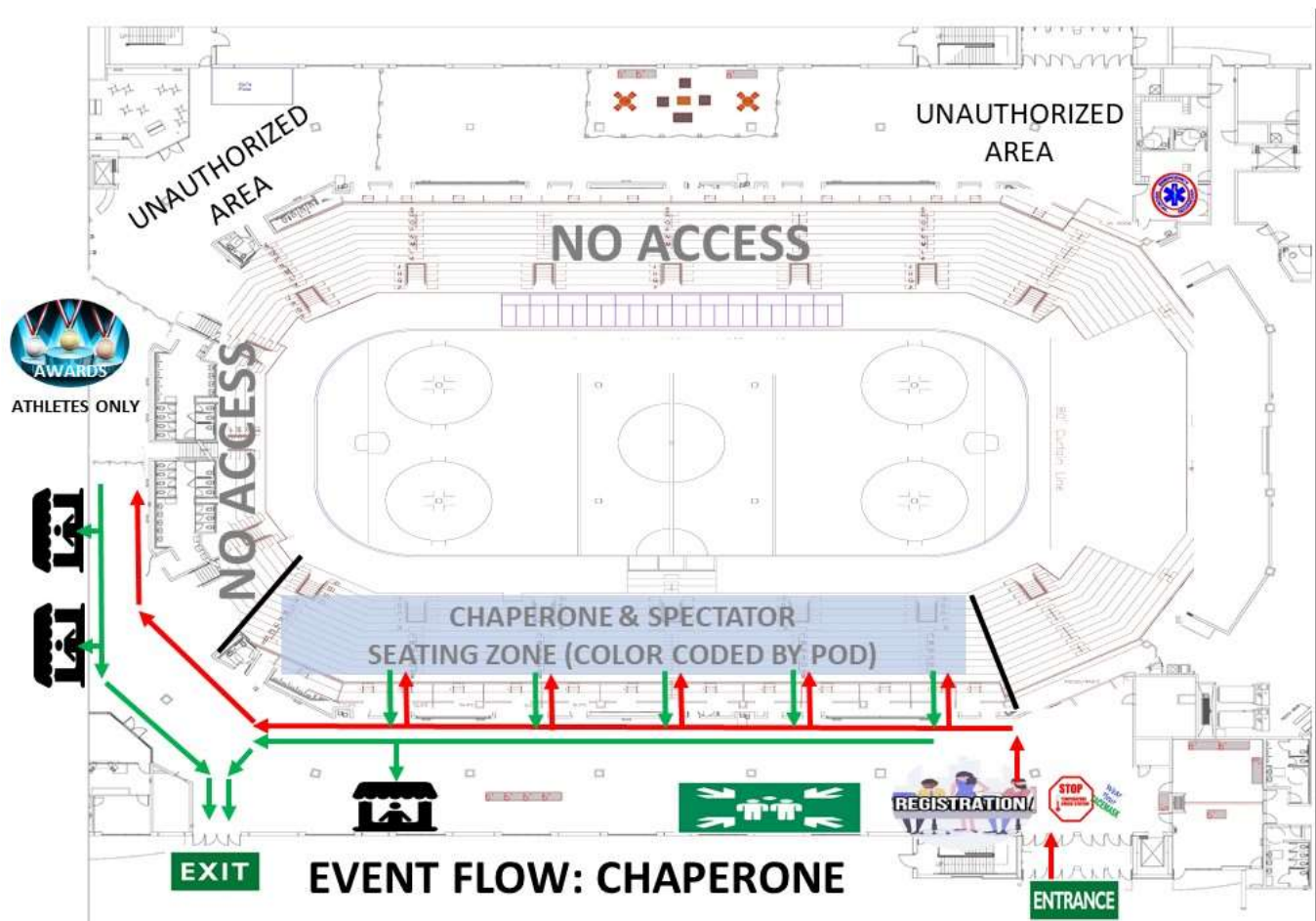
Athletes

- Temperature will be checked & screening will be administered upon entry.
- Masks must always be worn at all times, except by Athletes once they are on the ice.
- Athletes may only bring what they can carry, as they must carry items with them as they move from station to station.
- Ambassadors will escort each group of athletes to the area designated for off-ice warm up.
- 30 minutes is allocated for off-ice warmup and getting skates on.
- Athletes will enter and exit the ice through designated gates that will be clearly signed.
- Chairs will be available for Athletes to sit on while the group is skating.
- Once an Athlete has completed their program for the event, they must remove their skates, gather their belongings, exit the rink side to the concourse, and meet their Chaperone(s).
- Results will be posted [online](#) (approximately 30 minutes after the event is complete, this will vary depending on the type of event).
- Athletes and chaperones may wait in the designated seating area for results to be posted, or exit the facility and return to collect awards.
- Athletes will meet their chaperones once awards are complete and promptly leave the facility.



Chaperones & Spectators

- Temperature will be checked & screening will be administered upon entry.
- Masks must always be worn while in the facility.
- Arena seating will be available in the designated sections only and rotated for sanitation purposes.
- Chaperones & Spectators will be directed into assigned arena seating based on their Athlete's Pod color, as their Athlete enters the backstage area.
- Special considerations will be made for chaperones to assist young Athletes or Athletes requiring special assistance in the Warm-Up area, if necessary.
- Athletes and Coaches may join Chaperones in designated arena seating following events, or meet them in the concourse.
- Announcer and Usher will direct sections to depart seating at designated times to allow cleaning prior to next group use. Please listen carefully and follow all directions of Competition Staff.
- Young children attending the event as spectators must remain with a Chaperone, at all times.
- Results will be posted [online](#) (approximately 30 minutes after the event is complete; this will vary depending on the type of event).
- Athletes and Chaperones may wait in their designated seating area for results to be posted (until asked to clear seating), or may exit the facility and return to collect awards.
- Chaperones & Spectators are not permitted in the immediate awards area.
- Athletes will meet their Chaperones once awards are complete and promptly leave the facility.

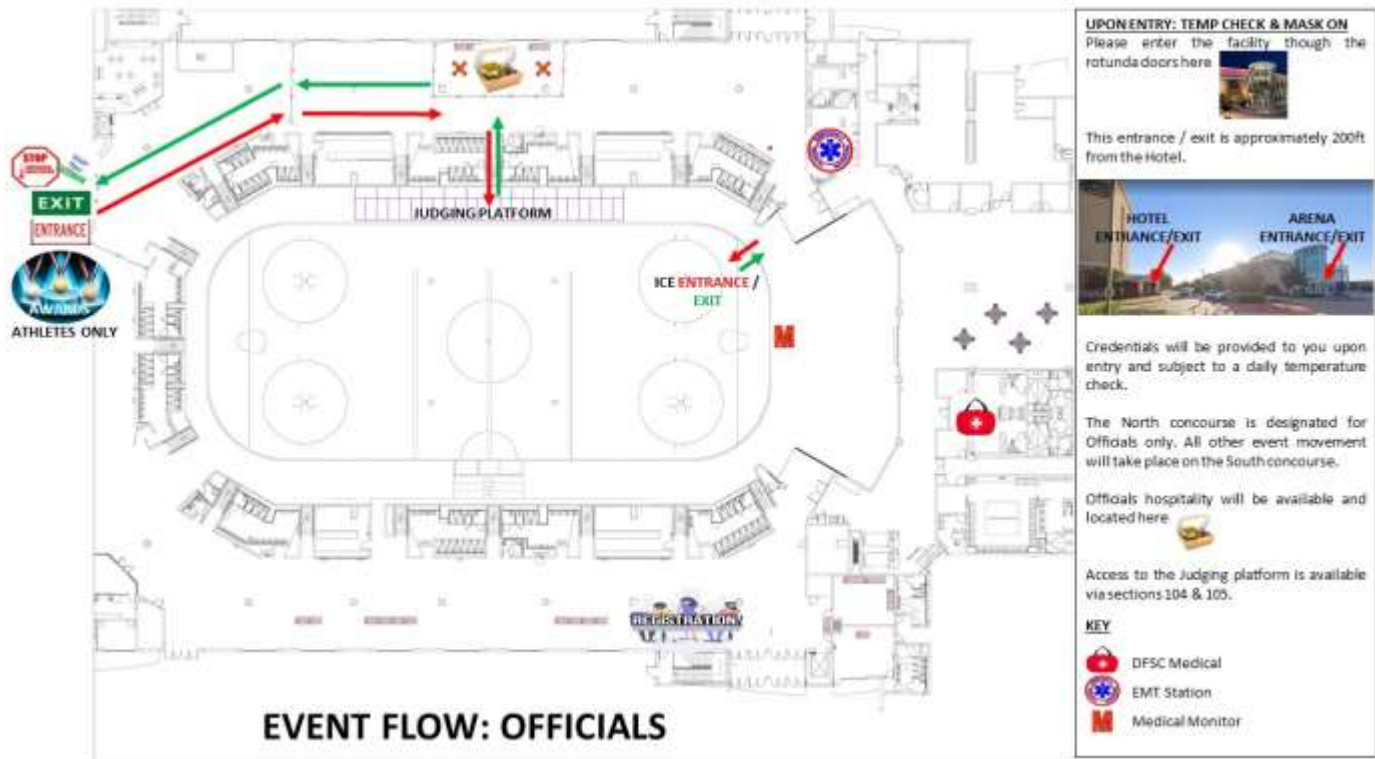


Coaches

- Temperature will be checked & screening will be administered daily.
- Masks must always be worn while in the facility.
- Grab-and-Go snacks will be available from hospitality, located directly outside Meeting room 1 & 2.
- Hospitality items can only be consumed in the designated eating area in back of house.
- Coaches should not stay in the building between events, unless they have another skater already in the building.
- Two (2) coaches will be allowed per skater in the building.
- Ice monitors will assign coaches a location to coach from during Practice Ice / Event warm-up. Please honor that location.
- Remote coaching via a communication device - A coach may communicate with a skater during practice ice and events as long as all SafeSport criteria and competition policies are met, including:
 - The skaters personal phone may not be used for communications.
 - The phone may not be brought on the ice, or propped up so that it could fall on the ice.
 - Two deep leadership must be adhered to while the communications are taking place. Event volunteers will not be able to fulfill the role.
 - Parents and other skaters are not allowed rink side during practice ice or events. Two deep leadership for such times would need to be fulfilled by another credentialed PSA compliant coach with appropriate access.
 - There are no exceptions to these policies, and violations may be reported to PSA and SafeSport.
- Results will be posted [online](#) (approximately 30 minutes after the event is complete, this will vary depending on the type of event).
- Only Athletes are permitted in the awards area.

Officials

- Temperature will be checked & screening will be administered daily.
- Masks must always be worn while in the facility.
- Individually packed snacks and meals will be available from Official's hospitality, located in the North concourse.
- Hospitality items can only be consumed in the designated eating area.
- Hospitality dining area will be arranged with social distancing in mind.
- The judging platform has been extended to enable social distancing between Officials.
- Regular sanitation will be performed of the hospitality area and judging platform. Sanitation supplies will also be readily available for Official's use if needed.



Awards

- Awards will be presented once results have been posted [online](#) (approximately 30 minutes after the event is complete, this will vary depending on the type of event).
- Awards cannot be presented until results are live [online](#).
- Athletes and Chaperones may wait in the designated seating area for results to be posted, or exit the facility and return to collect awards.
- Only Athletes are permitted in the awards area.
- Awards will be presented to 1st – 6th place.
- The podium positions will be staggered with social distancing in mind. In the event there is a tie, the tied athlete will rotate with the other on the podium. They will not be allowed to share a block at the same time.
- Athletes will be allowed to remove their masks for the photo only, if they wish.
- Awards will be given to each athlete (6th – 1st) on a tray. The recipient must remove the award from the tray and place it on themselves.
- Once awards have been received and the photo has been taken, Athletes must locate their Chaperone and immediately leave the facility.

Practice Ice Flow

- Masks are required inside building except while you are skating on the ice.
- One-way paths will be clearly marked and ice monitors will provide directions to ensure the safest space for all participants. Keep social distancing in mind at all times.
- Locker rooms are NOT available. Athletes are encouraged to come in with skates & guards on.
- Indoor Off Ice Warmup area will NOT be available during practice sessions.
- Skaters and Coaches should arrive for temp check 20 min prior to session start time and will then be directed to ice monitor rink side.
- Program music will be played only from digital upload, one time per skater on their assigned official practice session. No handling of CDs or devices will be permitted for music play.
- Number of skaters allowed on each practice session is limited for safety.
 - *. Chaperones accompanying athletes to practices are not allowed in rink side coaching areas and will be encouraged to drop off skaters and wait outdoors or in cars to limit indoor occupancy. Limited chaperone seating in designated socially distanced areas will be available.
- Coaches will be directed by the ice monitor to separated individual door or window coaching locations to ensure social distancing. If you are coaching on consecutive Practice Ice Sessions, please notify the Ice Monitor.
- The Ice Monitor will direct the skaters to the door they will use to enter / exit the ice.
- All Coaches, Skaters and their Chaperones will be required to exit the rink and leave the building promptly once the Practice Ice Session is complete, unless you are on the next session or have an event immediately following.

Disinfecting Process

- Warm up areas will be disinfected after each pod has exited using handheld foggers.
- After each event Segment, Chairs and areas that have been touched by the skaters/coaches will be disinfected.
- The bleacher section the Chaperones used will be disinfected per rotation schedule.
- Practice Ice areas will be disinfected at scheduled times throughout the day, in line with ice cuts.
- Officials staging area will be disinfected at scheduled times through out the day, in line with ice cuts.

COVID Considerations

- Must not be exposed to known positive covid-19 individuals without proper droplet plus universal precautions (gloves, gown, mask, shield).
- Must not have a cluster of the CDC signs/symptoms of Covid-19.
- Temperature not to exceed 100.4 degrees.
- Any individuals unable to pass temperature screen to not be permitted into the event.
In the event a temperature screen is failed:
 - ATHLETES & COACHES:** will be informed to wait outside for an LOC. The screener will put in a radio call for an LOC to evaluate Athletes and Coaches. The LOC will make the final call and they will notify Registration & Debra Dryburgh (Accounting) the Athlete or Coach has been withdrawn.
 - VOLUNTEERS / CHAPERONES:** Will be informed to leave the facility. LOC re-check is NOT required. Screeners will notify Registration if a Volunteer has been denied access so they can begin to find cover.
 - OFFICIALS:** will be informed to wait outside for an LOC. The screener will put in a radio call for LOC to evaluate. The LOC will make the final call and notify Nancy Iida (Chief Referee) the Official has been withdrawn.
- Social distancing of all persons in the building must be demonstrated at all times in all areas, including at registration tables, officials' panels, designated ready areas, and designated coaching slots for coaches/coaching teams rink side on the boards during warm-ups.
- Easy access/ Availability of hand sanitizer will be available throughout the facility.